

2020 Ohio Master Gardener State Conference

Brie Arthur

Gardener in
Fuquay-Varina, NC
USDA Zone 7

Author of
The Foodscape Revolution
Gardening with Grains






Growing Veggies with an
HOA circa 2006

Is THIS the best we can do?




A close-up photograph of a garden bed. On the left, there are several purple basil plants with serrated leaves and small white flowers. To the right, there are bright yellow daisy-like flowers. In the center-right, two dark purple eggplants are visible on their stems. At the bottom, there are clusters of red chili peppers. The background is filled with various green and purple foliage, creating a dense and colorful scene.

I dream landscape can be
BEAUTIFUL & BOUNTIFUL

A close-up photograph of many children's hands, of various skin tones, held out in a circle. Each hand contains a small amount of dried seeds or small grains. The children are wearing colorful clothing, including a purple shirt with a graphic of the Eiffel Tower and a pink shirt. The background is dark and out of focus.

I dream
landscapes can
teach where
food comes from



Train the next
generation to be
the best
stewards of the
Earth



Home gardening blooms around the world during coronavirus lockdowns

Christopher Walljasper and Tom Polansek



Jaime Calder holds her daughter Lucy while her daughter Billie plants some squash in their vegetable garden in Round Rock, Texas, amid the coronavirus disease (COVID-19) spread in the U.S., April 7, 2020.

REUTERS/SERGIO FLORES

Growing food is the “in thing”





Let's start a conversation
EVERYONE EATS!

What is a Foodscape?





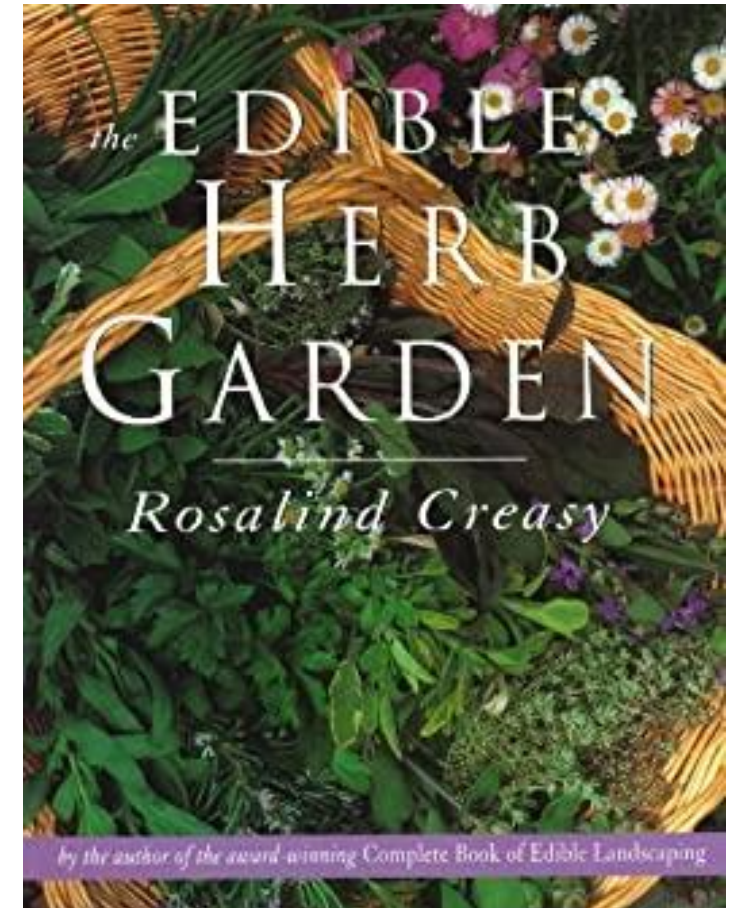
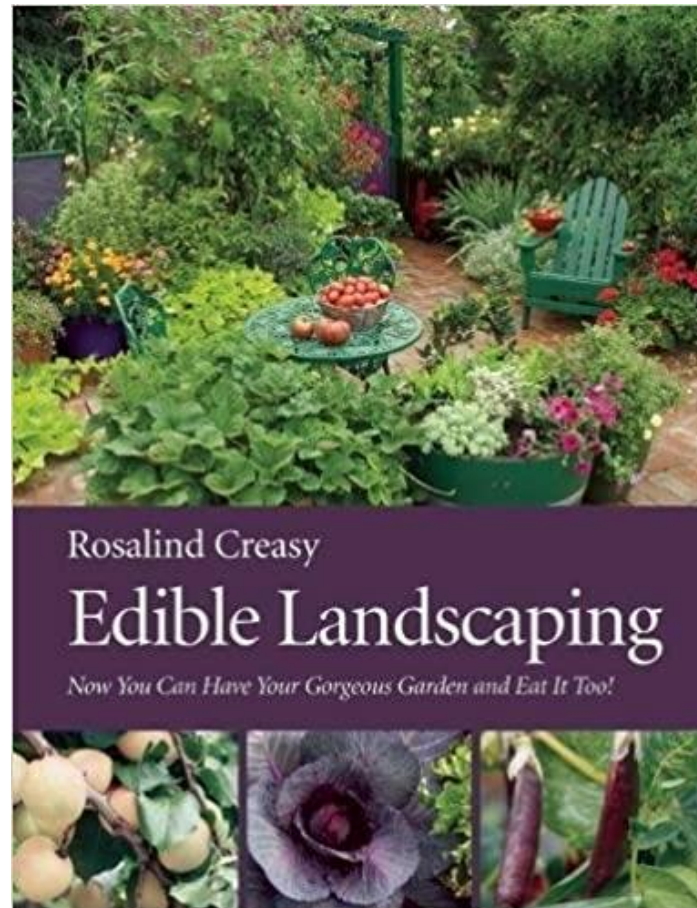
Landscape that produces food & flowers

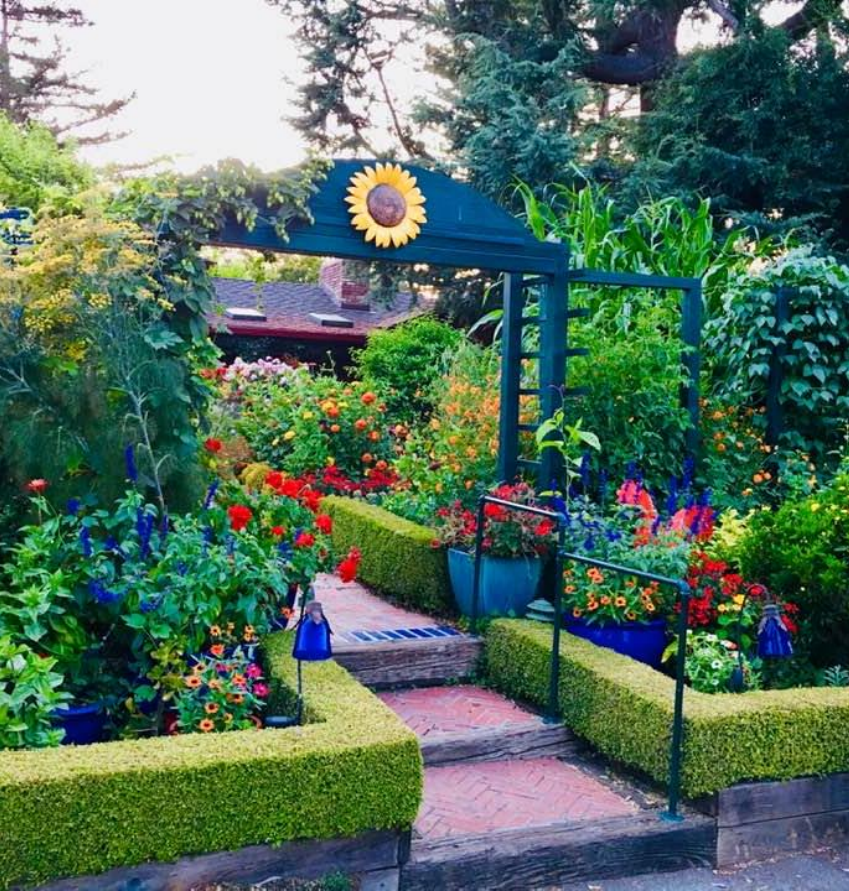


Integration of edibles in a traditional landscape & containers

Every landscape is an opportunity to grow some food in a beautiful and productive way

Ros Creasy

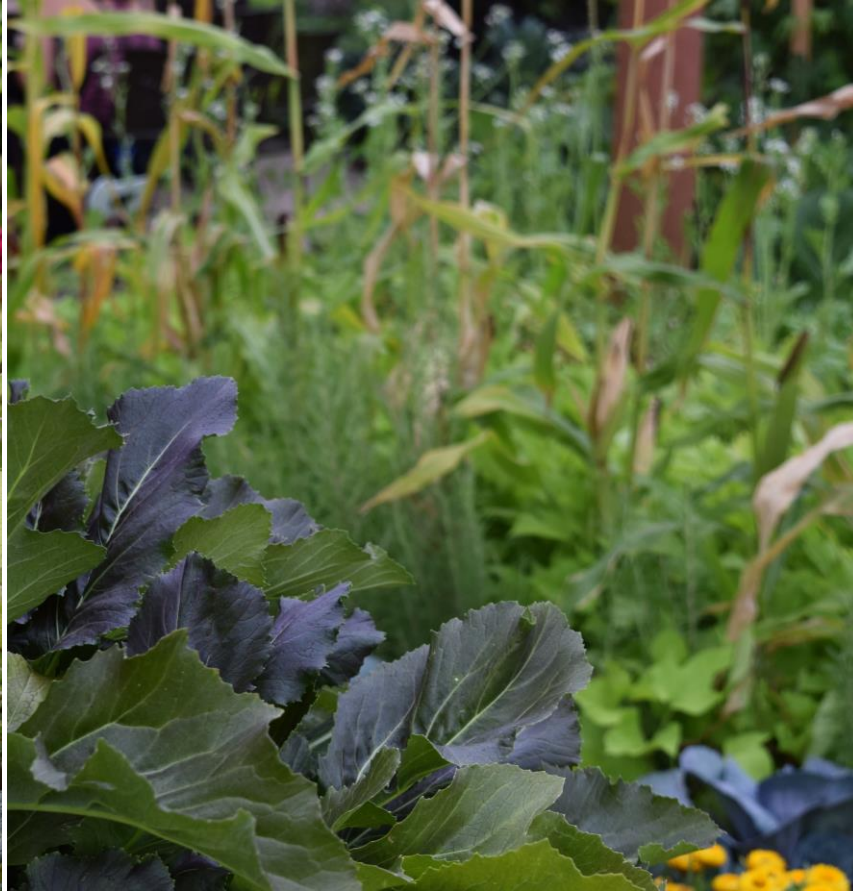




Ros Creasy's Edible Landscape



Chanticleer Garden



Epcot

Foodscape Design Basics

- Draw a plan to scale
- Select ornamental trees, shrubs and perennials for structure
- Focus on open, sunny areas in existing landscape
- Rotate crops seasonally
- Utilize cover crops
- Focus on diversity not monoculture planting
- Devote budget to quality compost seasonally= SOIL3

A photograph of a house with a porch, white columns, and a brick wall. The text "Existing Mulch Space" is overlaid in white. The house features a gabled roof with grey shingles and a white fascia. The porch has white columns and a brick base. The main body of the house is made of dark grey brick. There are two windows with white frames and dark shutters. A small tree with reddish-brown leaves is in the foreground on the right. Several green shrubs are in the foreground on the left. The ground is covered with brown mulch.

Existing Mulch Space



You don't have to grow in straight lines

Think about what you eat ALL of the time

- Focus on growing PRACTICAL food crops that you like to cook with
- Grow A LOT of them to help change your buying habits
- Cultivate extra to share with friends and family





MY TOP 5 veggies are:

1. Tomatoes
2. Onions and garlic
3. Potatoes
4. Peppers
5. Wheat flour



Foodscaping Plant Palette



NATIVES

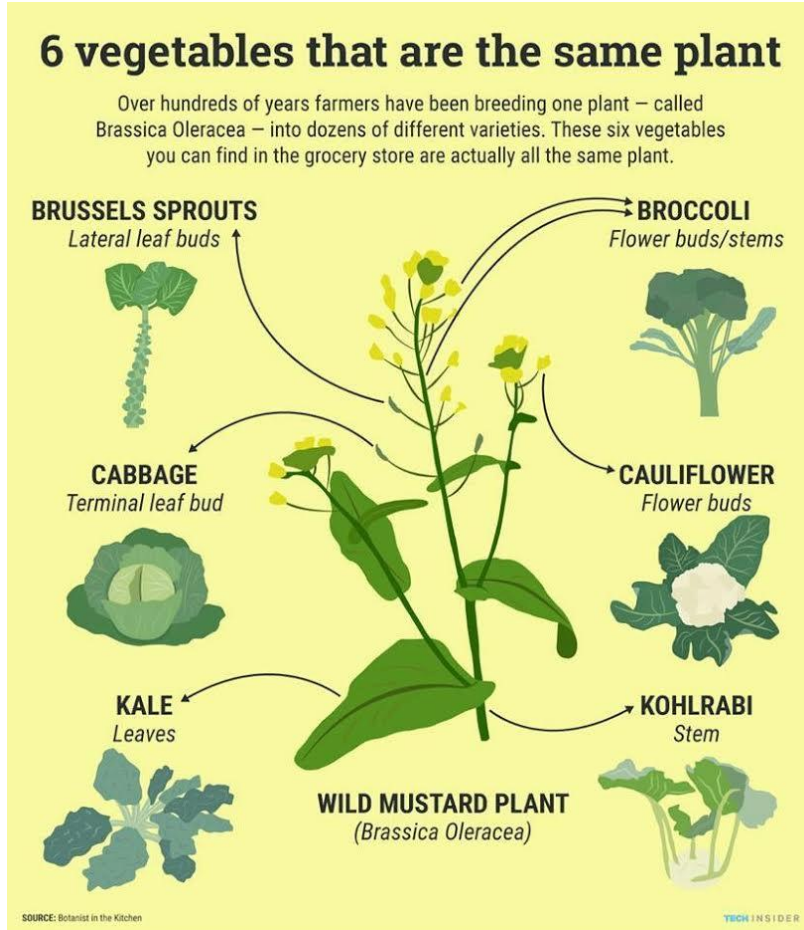
EDIBLES

BEST from all
categories!

ECOLOGICAL

ORNAMENTALS

Food Crops LACK Diversity



Solanaceous Crops

- Family: Solanaceae
 - Warm Season Perennials
 - Naturally self pollinating
 - Tomato (*Lycopersicon esculentum*)
 - Pepper (*Capsicum annuum*, *C. frutescens*, *C. chinense*)
- Other Solanaceous crops:
- Potato (*Solanum tuberosum*)
 - Eggplant (*Solanum melongena*)
 - Tomatillo (*Physalis ixocarpa*)

A lush garden scene featuring a variety of plants. In the foreground, there are bright yellow daisies and clusters of small purple flowers. The background is filled with more yellow flowers and dark, silvery foliage. A semi-transparent white box is overlaid on the upper part of the image, containing the text.

Ornamental Plants offer Biological Diversity



Plant Families represent diversity

- *Apiaceae* Celery Family
- *Asteraceae* Aster Family
- *Brassicaceae* Mustard Family
- *Fabaceae* Bean Family
- *Lamiaceae* Mint Family
- *Liliaceae* Lily Family
- *Malvaceae* Mallow Family
- *Rosaceae* Rose Family
- *Solanaceae* Tomato Family

Select the BEST plants for your region



Find the
Newest AAS
Winners
on the
**"Buy AAS
Winners"**
page



Cool season guide (September-May)

Plant Name	Seed Date	Transplanting Date	Harvest Date
Arugula	August - March	October - March	October - May
Barley	October - November	November - January	June
Broccoli	August - March	October - March	October - May
Cabbage	August - March	October - March	October - May
Carrots	August - March	Direct Seed (do not transplant)	May - September
Cauliflower	August - March	October - March	October - May
Chard	August - March	October - March	October - May
Cilantro	August - March	Direct Seed (do not transplant)	March - June
Garlic	Directly plant clove	September - December	June
Kale	August - March	October - March	October - May
Kohlrabi	August - March	October - March	October - May
Lettuce	August - March	October - March	October - May
Mustard	August - March	October - March	October - May
Oats	October - November	November - January	June
Peas	August - March	October - March	April - May
Potatoes	Directly plant tuber	February - March	June
Radish	August - March	October - March	October - May
Spinach	August - March	October - March	October - May
Wheat	October - November	November - January	June

Warm season guide (May-September)

Plant Name	Seed Date	Transplanting Date	Harvest Date
Beans	April - July	May - July	August - October
Corn	April - July	May - July	July - September
Cucumbers	May - August	May - August	June - September
Eggplant	March - May	April - June	June - October
Melons	April - July	May - July	July - September
Okra	April - July	May - July	July - September
Peanuts	April - July	May - July	October
Peppers	March - June	May - July	August - November
Pumpkins	May - July	May - July	October
Rice	March - May	April - June	September
Squash	April - August	May - August	June - October
Sweet Potatoes	Directly plant tuber	May - July	October
Tomatoes	March - June	April - June	June - October
Zucchini	April - August	May - July	June - October

Match cultural needs

Sunlight:

FULL SUN= 8+ hours

PART SUN = 4-6 hours

SHADE= 4 hours or less

Water:

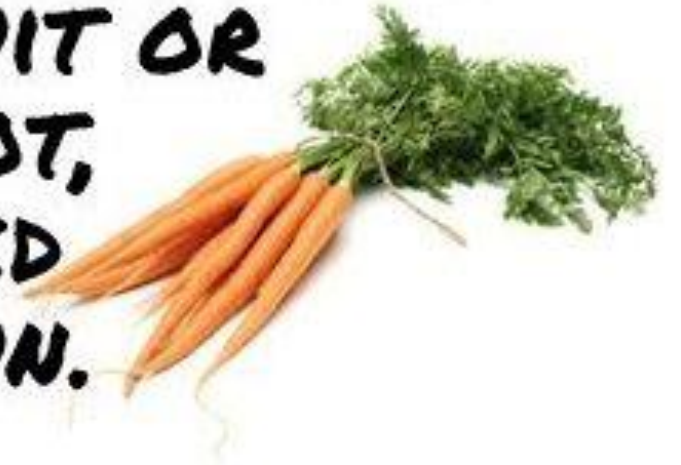
DAILY = site close to hose!

WEEKLY = once established





**IF YOU GROW IT FOR
THE FRUIT OR
THE ROOT,
YOU NEED
FULL SUN.**



**IF YOU GROW IT FOR
THE LEAVES,
PARTIAL SHADE
IS ALL YOU NEED.**



Success starts with **LIVING SOIL**
rich in organic matter



Organic Fertility



Espoma Brand



Quality Compost



Fish Emulsion



What about insects?



Cabbage Worms: *Pieris rapae*

The adult butterflies are sometimes called cabbage whites or small whites and they lay eggs on plants in the Brassicaceae family, such as cabbage, kale, cauliflower, broccoli, and other members of the cabbage vegetable family.



Cross Striped Cabbage Worm: *Evergestis rimosalis*

- Cross-striped cabbageworm lays its eggs in batches (3 to 25) rather than singly.
- Egg batches are yellow, flattened, and attached to the lower leaf surfaces.
- Larvae grow to 3/4"-long in 2 to 3 weeks.
- The caterpillars are light bluish-grey on top and green underneath, with numerous black bands across their backs and a yellow line down each side.

Bacillus thuringiensis Bt:

Gram-positive

Soil-dwelling bacterium

Commonly used biological pesticide

“Organic” safe



Organic Pest Control

Copper sulfate: Destroys fungi and some weeds

Horticultural oils: Refers to oil extracts from various plants with anti-insect effects

Rotenone: An insecticide used in combination with other organic pesticides





Biological Controls

A biological pesticide is a **biotechnical organism** and can be either a biocidal product or a plant protection product. Biological control often includes natural enemies to the pest organisms to be controlled.

Is Foodscaping “deer proof?”







Fencing

Repellents

Reflective tape

Vole King Bags

Motion censored irrigation



Foodscaping Solutions

Plants that deter animals:

Spicy Greens

Basil

Garlic

Herbs

Onions

Potatoes





Spicy Greens Groundcovers

Mix Arugula, Chard, Lettuce, Kale, Mustard & Spinach seed together

Broadcast seed over 1" of Soil3 organic compost



Herbs: Basil

Herbs: Oregano & Thyme





Herbs: Rosemary



Where do
French fries
come from?







Solanaceae plants have
poisonous foliage



3 months later...

80lbs of potatoes harvested!

Serving the
potatoes at
July 4 Picnic



Want to make a
difference in the world?

Just grow Garlic



Favorite Variety: 'Music'



Plant in fall
along bed
edges to
deter VOLES

Remove
flower scape
in spring





Harvest the
bulbs when
foliage dies in
late Spring



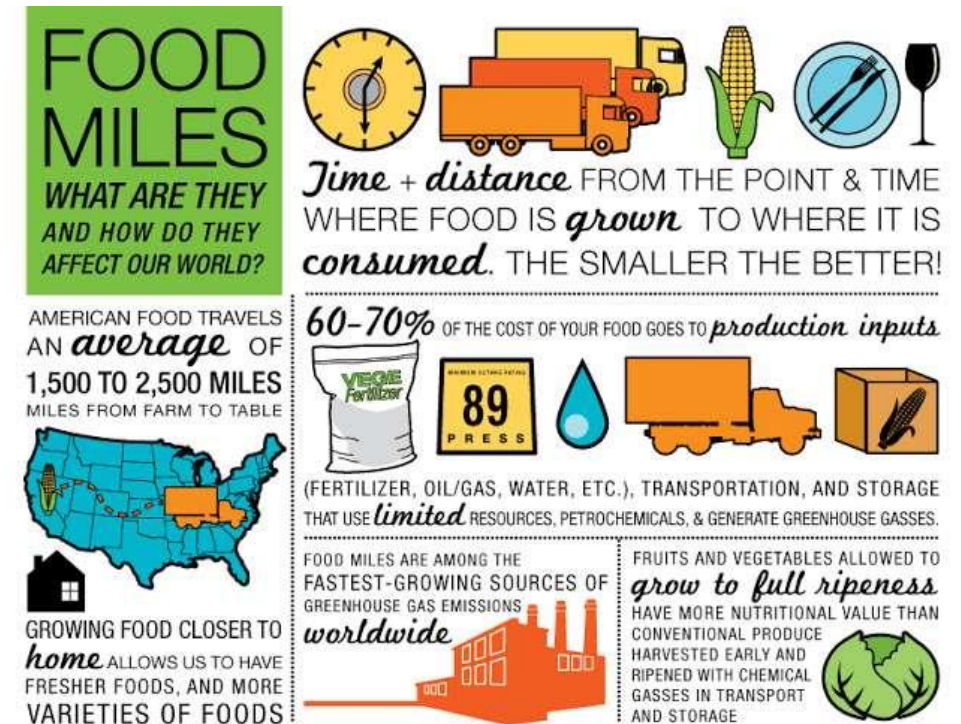
As of 2012, China is the largest producer of garlic

59 million metric tons annually

66% world production

90% US

US AVERAGE 2,200 MILES PER PRODUCT



Every landscape offers an opportunity to grow some food in a beautiful and productive way





Let's start a
Foodscape
Revolution
in our
neighborhood!



Installing Foodscapes for neighbors
during the Covid-19 Pandemic

Filming Growing A Greener World TV





Episode 1102: The Foodscape Revolution

BY GGWTV ON SEPTEMBER 12, 2020



Watch anytime
on GGWTV.com

or check local
PBS listings

DREAM BIG!



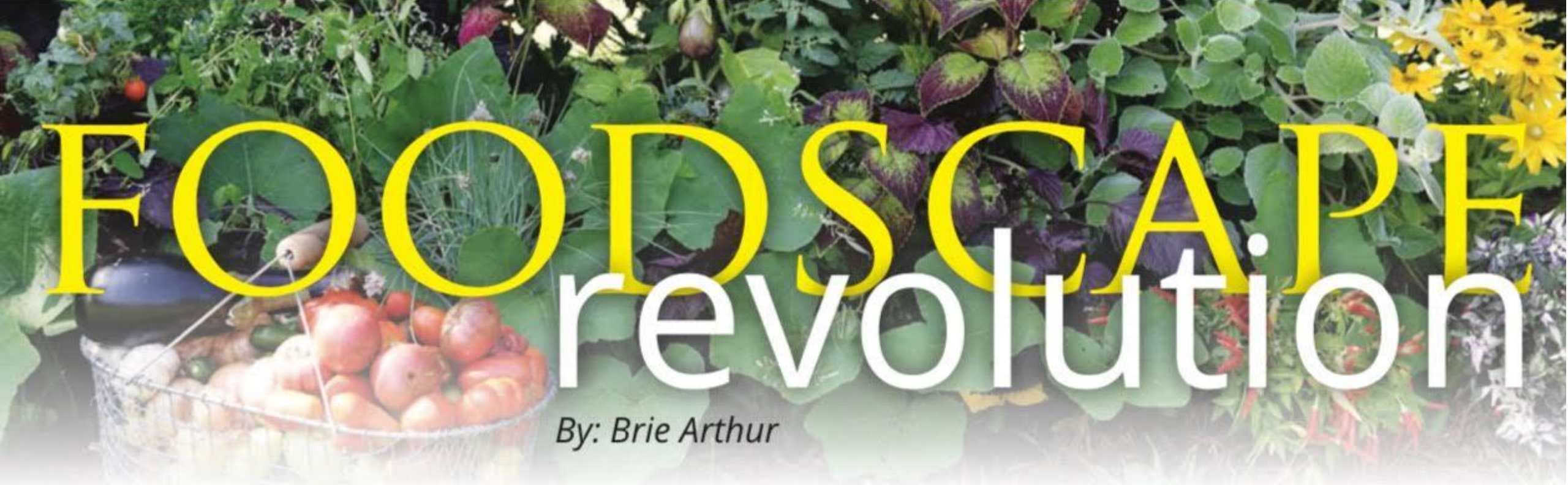


180 MILLION acres
of development in US

Churches, Residential Landscapes,
Entryways, Municipal Buildings



Foodscaping is the Future!

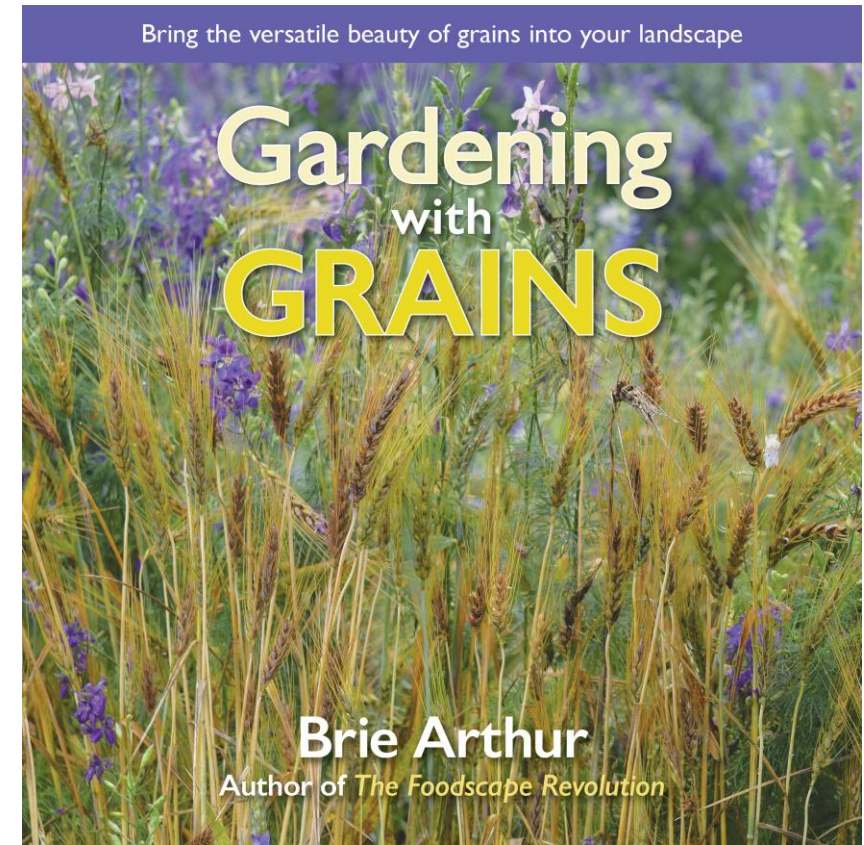
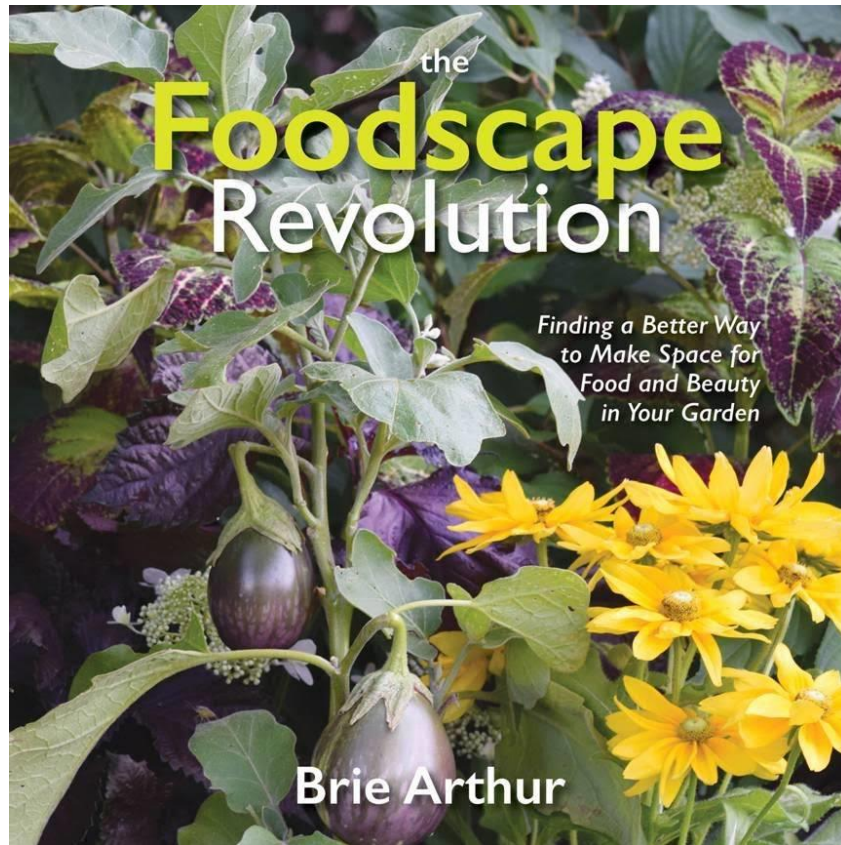


FOODSCAPE revolution

By: Brie Arthur

Thank you Ohio Master Gardeners

BRIE GROWS 

Visit BrieGrows.com
Sign up for my monthly newsletter!



BrieGrows.com



Brie Grows



BrieThePlantLady



Brie the Plant Lady