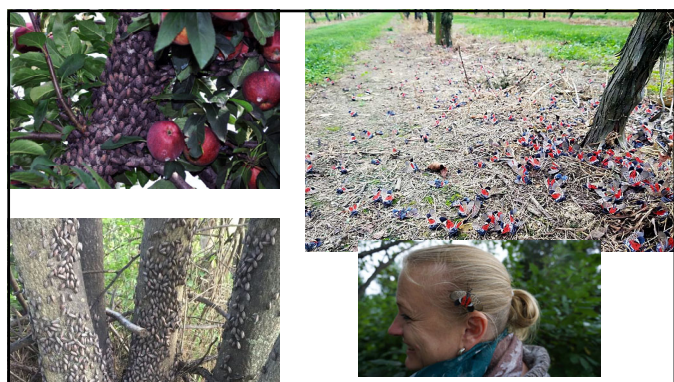


1



2



3



4



5



6

7

8

9

10

11

12

**Calling all canines:
Help sniff out the dangerous spotted lanternfly**



Sally Dickinson and her trained detection dog, Flint, search the vineyard at the Alston H. Smith Jr. Agricultural Research and Extension Center for spotted lanternfly egg masses. They are beginning to recruit other people with their dogs to do the same. It's a four-year project funded by the U.S. Department of Agriculture. Photo by Luke Hayes for Virginia Tech.

13

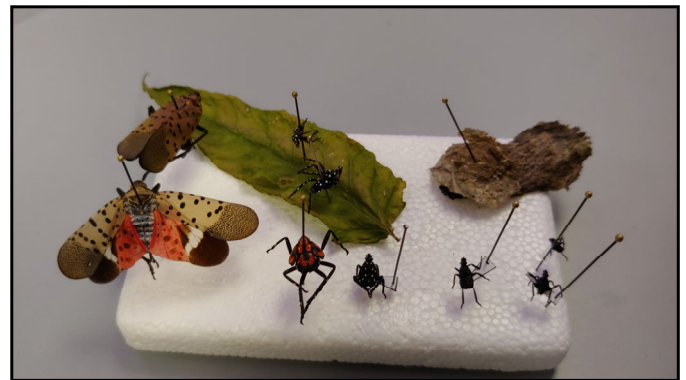


14



"Doom Bloom" is a spotted lanternfly honey made by Philadelphia Bee Co. Photograph courtesy of Philadelphia Bee Co.

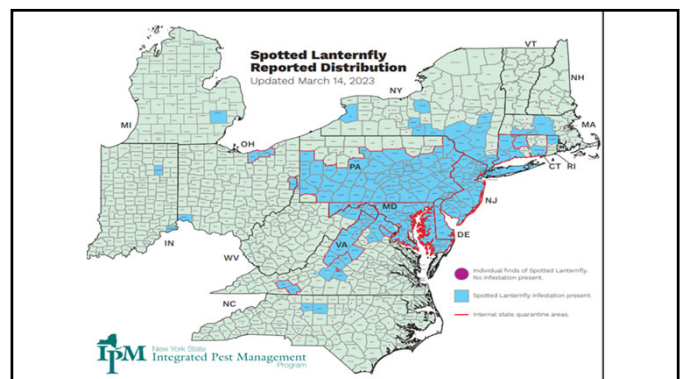
15



16



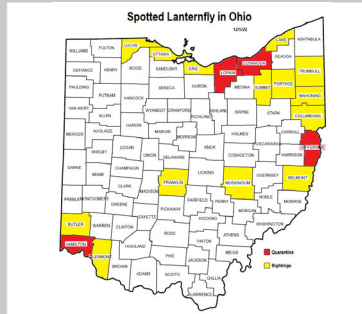
17



18

Spotted Lanternfly in Ohio Map,
Source: The Ohio Department of Agriculture

- Jefferson
- Cuyahoga
- Lorain
- Hamilton

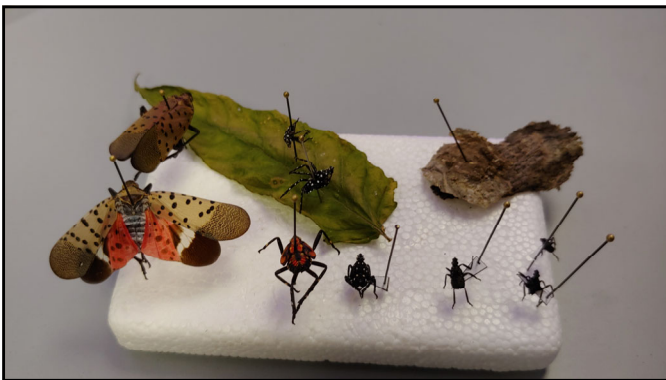


19



Reported new SLF sites in Cuyahoga County, 2022

20



21



22

Be a Spotted Lanternfly Spotter!



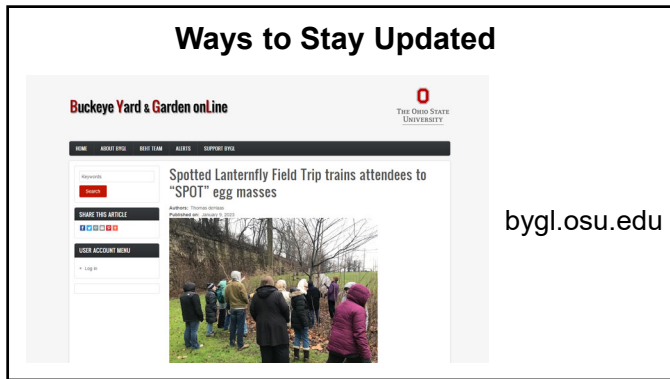
23

CFAES
Ohio Department of Agriculture – Report it!

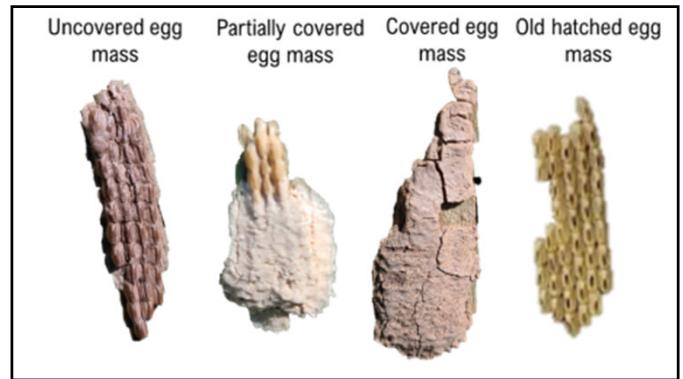


THE OHIO STATE UNIVERSITY COLLEGE OF FOOD, AGRICULTURAL, and ENVIRONMENTAL SCIENCES

24



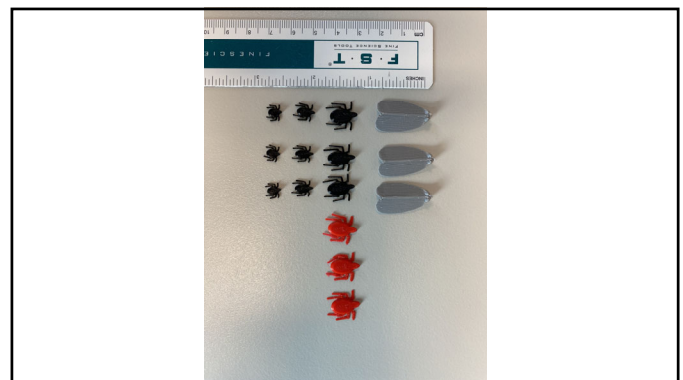
25



26



27



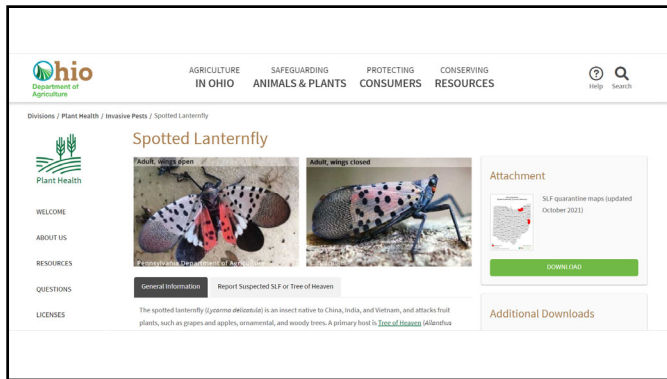
28



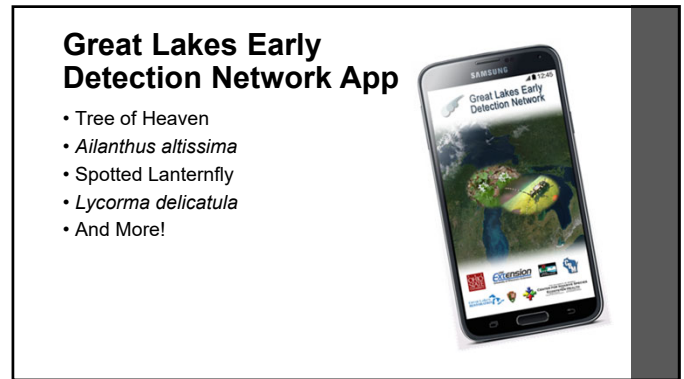
29



30



31



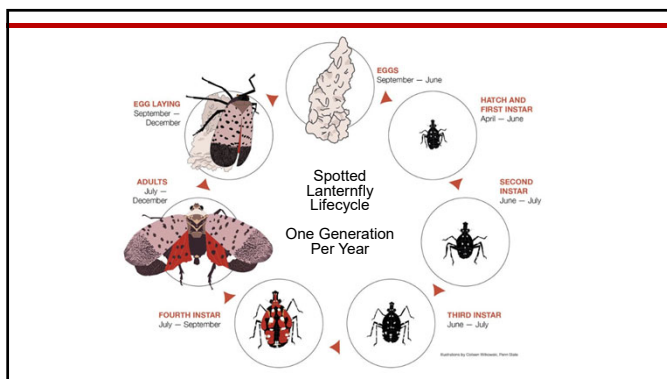
32



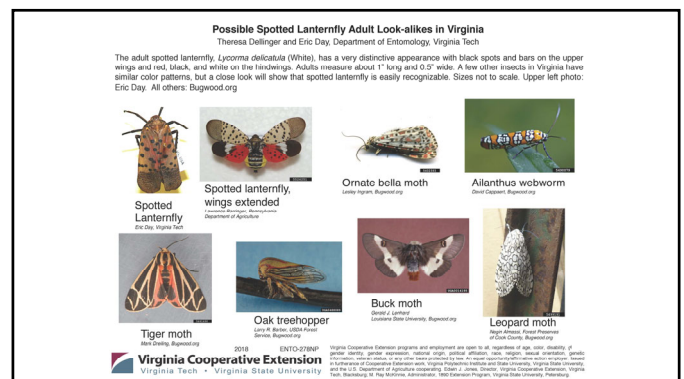
33



34



35



38

Possible Spotted Lanternfly Egg Mass Look-alikes in Virginia
Theresa Dellinger and Eric Day, Dept. of Entomology, Virginia Tech

Egg masses of the spotted lantern fly, *Lycorma delicatula* (White), are usually covered with a smooth tan to gray colored coating when fresh. This coating may crack and fall off with age, exposing eggs laid in vertical rows underneath. Some egg masses are laid with only some or no covering at all. Here are a few other insect egg masses found in Virginia to help you recognize those of the spotted lantern fly. Sizes not to scale.



Chinese mantis egg case winery
Cranshaw, CO State Univ., Bugwood.org



Spotted lanternfly eggs without covering.
Kenneth R. Lee, USDA APHIS PPQ, Bugwood.org



Gypsy moth egg masses covered with brown hairs.
Aurea Sapi, UK State Dept. of Ag., Bugwood.org



Lichen on bark
Eric Day, Virginia Tech



Wheel bug eggs and nymph
Johnny N. Dell, Bugwood.org



Cartersworm eggs
PA Dept. of Conservation and Natural Resources - Forestry, Bugwood.org



Eastern tent caterpillar eggs winery
Cranshaw, CO State Univ., Bugwood.org


Virginia Cooperative Extension
Virginia Tech • Virginia State University

2018 ENTG-27000
Virginia Cooperative Extension programs and employees are equal in all respects to the color, disability, gender, genetic identity, gender expression, national origin, political affiliation, race, religion, sexual orientation, genetic characteristics, marital status, or any other basis prohibited by the federal agricultural statutes, federal and state laws, and the U.S. Department of Agriculture concerning: Robert J. Jones, Director, Virginia Cooperative Extension, Virginia Tech, Blacksburg, VA; Ray McCulloch, Administrator, 1001 Lancaster Program, Virginia State University, Pamplin.


39

Possible Spotted Lanternfly Immature Look-alikes in Virginia
Theresa Dellinger and Eric Day, Department of Entomology, Virginia Tech


Immature spotted lanternfly, *Lycorma delicatula* (White), are black with white spots when young. They turn red and black with white spots when older. A few other insects in Virginia have similar color patterns, but a close look will show that immature spotted lanternflies are easily recognizable. Sizes not to scale.




Young spotted lanternfly nymph
Berkus Co., Conservation Dist.




Older spotted lanternfly nymphs
Eric Day, Virginia Tech



Wheel bug nymph
Susan Ellis, Bugwood.org



Oak treehopper nymphs
Southern Forest Insect Work Cent., Bugwood.org



Assassin bug nymph
Susan Ellis, Bugwood.org

Virginia Cooperative Extension
Virginia Tech • Virginia State University

2018 ENTG-27000
Virginia Cooperative Extension programs and employees are equal in all respects to the color, disability, gender, genetic identity, gender expression, national origin, political affiliation, race, religion, sexual orientation, genetic characteristics, marital status, or any other basis prohibited by the federal agricultural statutes, federal and state laws, and the U.S. Department of Agriculture concerning: Robert J. Jones, Director, Virginia Cooperative Extension, Virginia Tech, Blacksburg, VA; Ray McCulloch, Administrator, 1001 Lancaster Program, Virginia State University, Pamplin.

40



41



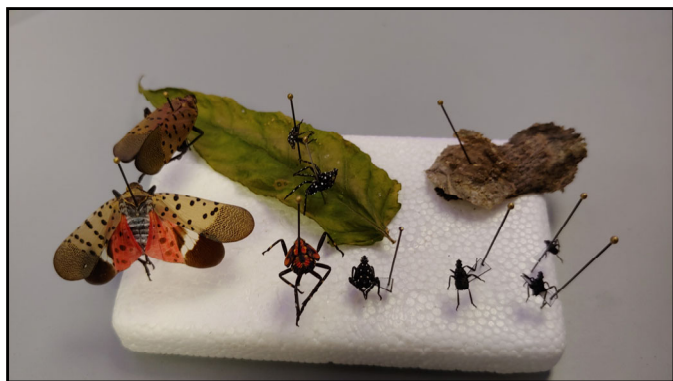
42



43

HOST	NYMPHS		NYMPHS		ADULTS	
	MAY	JUNE	JULY	AUGUST	SEPT	OCT
ROSE (CULTIVATED, MULTIFLORA, ETC.)						
GRAPE (WILD AND CULTIVATED)						
TREE OF HEAVEN						
BLACK WALNUT, BUTTERNUT						
RIVER BIRCH						
WILLOW						
SUMAC						
SILVER/RED MAPLES						

44



45



46